

# RDF researcher profile

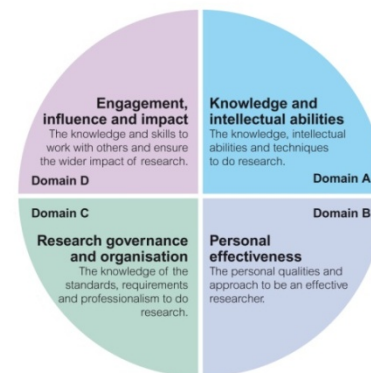


**Dr Kristina Hultgren:** Postdoctoral researcher in Sociolinguistics, University of Copenhagen and Edge Hill University, UK.

I graduated with a Masters degree in English and French from the University of Copenhagen in 1999 and then I worked for different international corporations I finished my PhD at Oxford in 2008.

**Career Aim:** Academic career

**Timeframe for development plan:** In order for it to make sense to me I had to decide on a timeframe so I thought 5 years ahead.



		Current phase				
		Target phase				
		1	2	3	4	5
<b>Domain C: Research organisation and governance</b>						
<b>1. Professional conduct</b>	Health and safety					
	Ethics and principles					
	Legal requirements					
	IPR and copyright					
	Respect and confidentiality					
	Attribution and co-authorship					
	Appropriate practice					
<b>2. Research management</b>	Research Strategy					
	Project planning and delivery					
	Risk management					
<b>3. Finance, funding and resources</b>	Income and funding generation					
	Financial management					
	Infrastructure and resources					

I am motivated by a desire to learn from colleagues and peers and thereby supplement my own knowledge and strengthen the quality of publications. I will reach my target phase by 'continuing to expand my network of potential collaborators'.

I will reach my target phase by 'sharing knowledge [which] will benefit everyone and create synergy. It's a win-win situation.

I am strongly committed to wider dissemination of knowledge and firmly believe that research should benefit the general public as they are the ones who finance our research.

I've had to manage the finance of my own research projects. As I am passionate about knowledge transfer and I'd be keen to raise awareness about its potential economic benefits in my own institution.

**Kristina Hultgren RDF reflections:**

'I have always thought of myself as being quite ambitious, driven and focussed on what I want, but the framework made me realise I can have a much larger vision'

'I found it [the RDF] very user friendly. It was useful to reflect on it because it helps to identify your skills and think about them in a more reflective manner.'

'I thought I didn't have the time to fill in the RDF but it is really important to get a sense of what it is I want to achieve and why I'm doing all the other things and what my ultimately goal is.'

'Decide on a particular time frame – are you aiming for 5 years or 20 years and have that in mind and apply it to all the different questions.'



Domain D - Engagement, influence and impact		Current phase				
		Target phase				
		1	2	3	4	5
<b>1. Working with others</b>	Collegiality					
	Team working					
	People management					
	Supervision					
	Mentoring					
	Influence and leadership					
	Collaboration					
	Equality and diversity					
<b>2. Communication and dissemination</b>	Communication methods					
	Communication media					
	Publication					
<b>3. Engagement and impact</b>	Teaching					
	Public engagement					
	Enterprise					
	Policy					
	Society and culture					
	Global citizenship					

I attended the Vitae 'Leadership in action' course. This course redefined my attitude to leadership and made me realise you can lead in lots of different ways and if you do it in a democratic and inclusive way it can be just as effective.

Many in my family and among my friends are also in academia but in different disciplines. We often discuss the way in which our research overlaps and potential opportunities for cross-fertilisation. I am thinking of co-authoring an article on a common theme.

My consultancy work has helped me widen my skills in this area. I am interested in communication technology and would like to put this knowledge to use.

I am very enthusiastic about global collaboration and want to promote this to others. The fact that I live in the UK but work in Denmark contributes to my ability to build bridges between the national and the international research communities

