

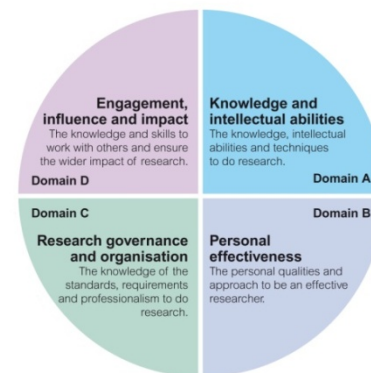
RDF researcher profile



Samantha Cartwright: Final year PGR in Conservation Biology, Centre for Agri-Environment Research, University of Reading

Career aim: I'm in two minds at the moment and may change my mind frequently in this next year. If not an academic career then what I'm aiming to do is field based project management in a larger non-governmental organisation (NGO).

Timeframe for development plan: Medium term (within a five year period).



		Current phase				
		Target phase				
		1	2	3	4	5
Domain C: Research organisation and governance						
1. Professional conduct	Health and safety					
	Ethics and principles					
	Legal requirements					
	IPR and copyright					
	Respect and confidentiality					
	Attribution and co-authorship					
	Appropriate practice					
2. Research management	Research Strategy					
	Project planning and delivery					
	Risk management					
3. Finance, funding and resources	Income and funding generation					
	Financial management					
	Infrastructure and resources					

As a field biologist I take health and safety very seriously. H&S is very important and managing H&S is integral to managing project operations.

Ethics in my field are associated with wildlife sampling, and animal welfare. There are various legal and institutional requirements to be aware of and adhere to. Procedures currently in place are often inefficient and ineffective. I would like to reach a position where I can effect appropriate change.

I would like to lead by example and set good academic practice in my field, eliminating unfair treatment of co-authors and advising less experienced peers.

I manage my PhD grant resources, keep my own accounts and have to work within my financial limitations effectively.

Samantha Cartwright: RDF reflections

'It put career development back into the forefront of my mind as it can often slip back when you're engaged in what you're doing day to day. If you're prepared to put the effort in to think about the statements that are in [the RDF] then I think it can really help.'
 'You need to want to do this – it's not just going to work its magic without you putting the effort in. You need to engage your brain and create a train of thought that you wouldn't necessarily have motivated yourself to do anyway.'



Domain D - Engagement, influence and impact		Current phase				
		Target phase				
		1	2	3	4	5
1. Working with others	Collegiality					
	Team working					
	People management					
	Supervision					
	Mentoring					
	Influence and leadership					
	Collaboration					
	Equality and diversity					
2. Communication and dissemination	Communication methods					
	Communication media					
	Publication					
3. Engagement and impact	Teaching					
	Public engagement					
	Enterprise					
	Policy					
	Society and culture					
	Global citizenship					

I'd like to see more harmonious working relationships and far more support between colleagues - mainly to share research ideas and advice, but also on a personal level. I'd like to demonstrate to colleagues that feedback is positive - as long as its honest, and works both ways.

I am not a confident speaker and would like to be a better formal communicator. This is essential for collaborations. Incremental accumulation of experience, moving into an appropriate career role and perhaps some specific training will help me reach my target phase.

My PhD has a limited relationship to business /commerce but corporate funders play a large part in conservation programmes. To lead in this area is essential in order to be a good project manager. It's a competitive work and projects only succeed if their managers are well-adept at securing relationships with business and commerce.