



Doctoral researchers in the UK

Mark Gittoes

Head of Quantitative Analysis for Policy

Researcher Development Conference

8th September 2008

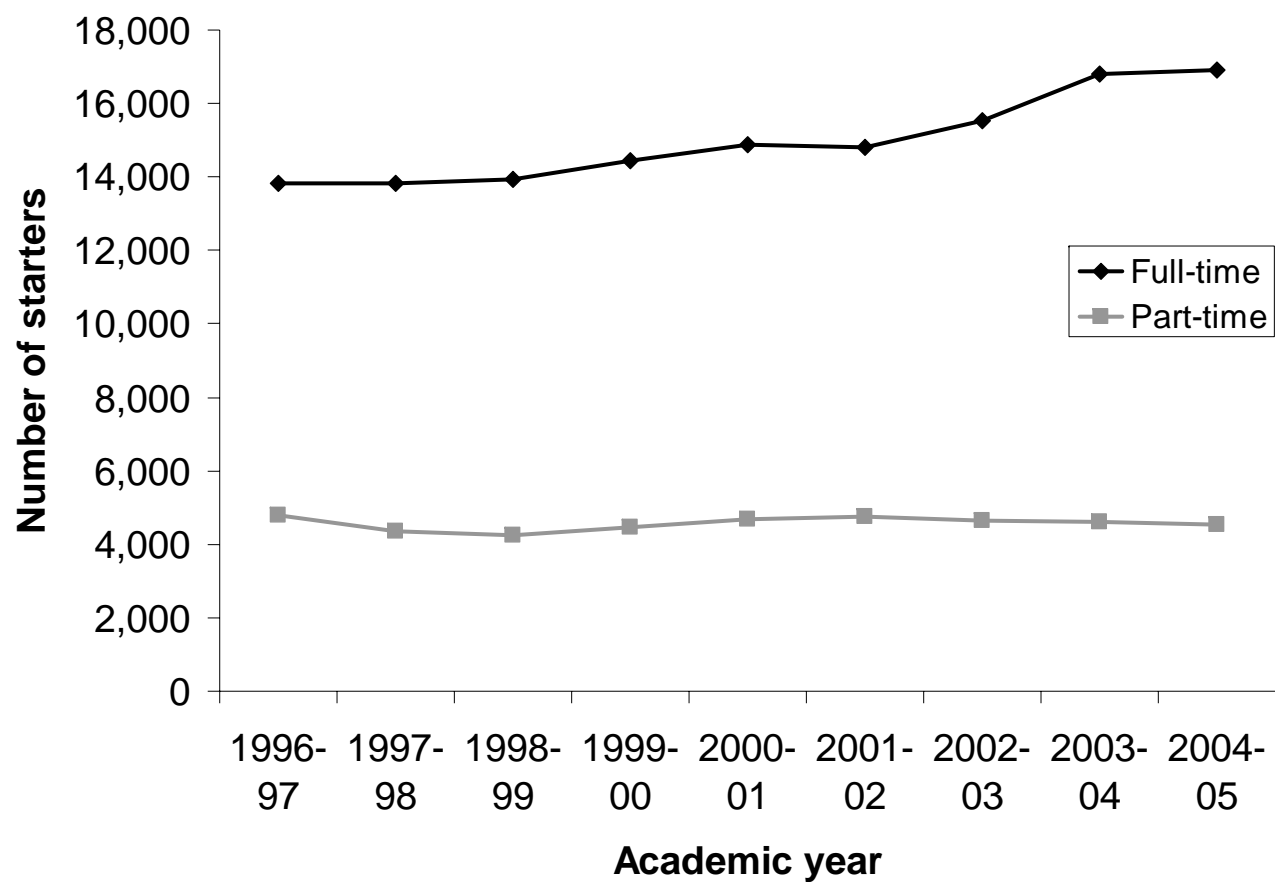
Talk overview

- Considerations
- Overall trend
- Overall profile by personal characteristics
- Variation in characteristics by subject area
- Profile by course particular characteristics

Considerations

- Registrations on MPhil courses
 - Track for two years following MPhil
 - Shorter time series
 - Around 4,500 each year
- PhD short hand for “doctorate degree by research”
 - Includes some specialist doctoral degrees (e.g. EngD)
- Not a complete picture, more information in forthcoming HEFCE issues paper

Number of PhD starters



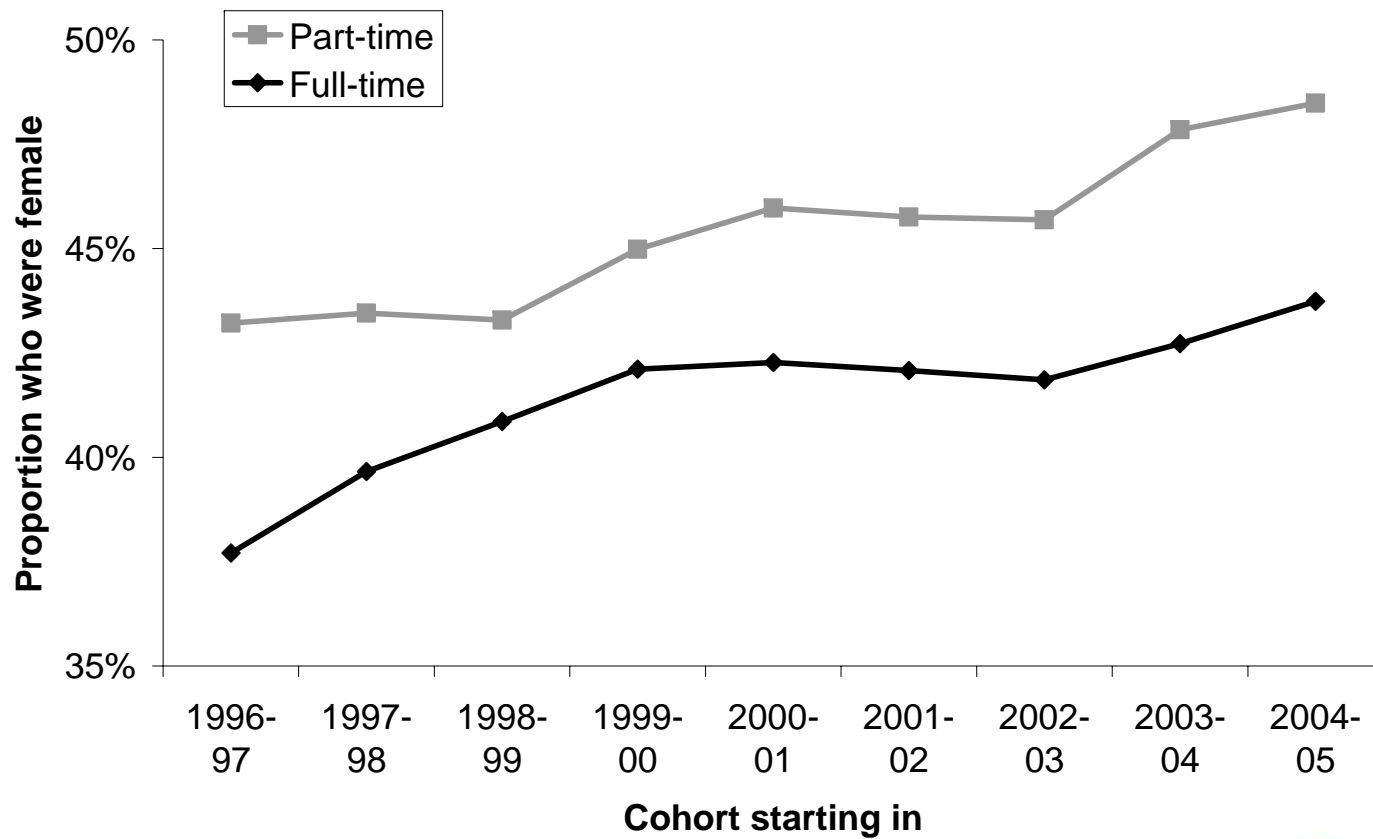
Domicile of full-time starters

Domicile	1996-97	2004-05	% change
UK	8,313	8,501	2%
EU (excluding UK)	1,624	2,500	54%
Non-EU	3,904	5,918	52%
Total	13,841	16,919	22%

Domicile of part-time starters

Domicile	1996-97	2004-05	% change
UK	3,903	3,348	-14%
EU (excluding UK)	313	464	48%
Non-EU	581	713	23%
Total	4,797	4,525	-6%

Male / Female profile



Age of starters

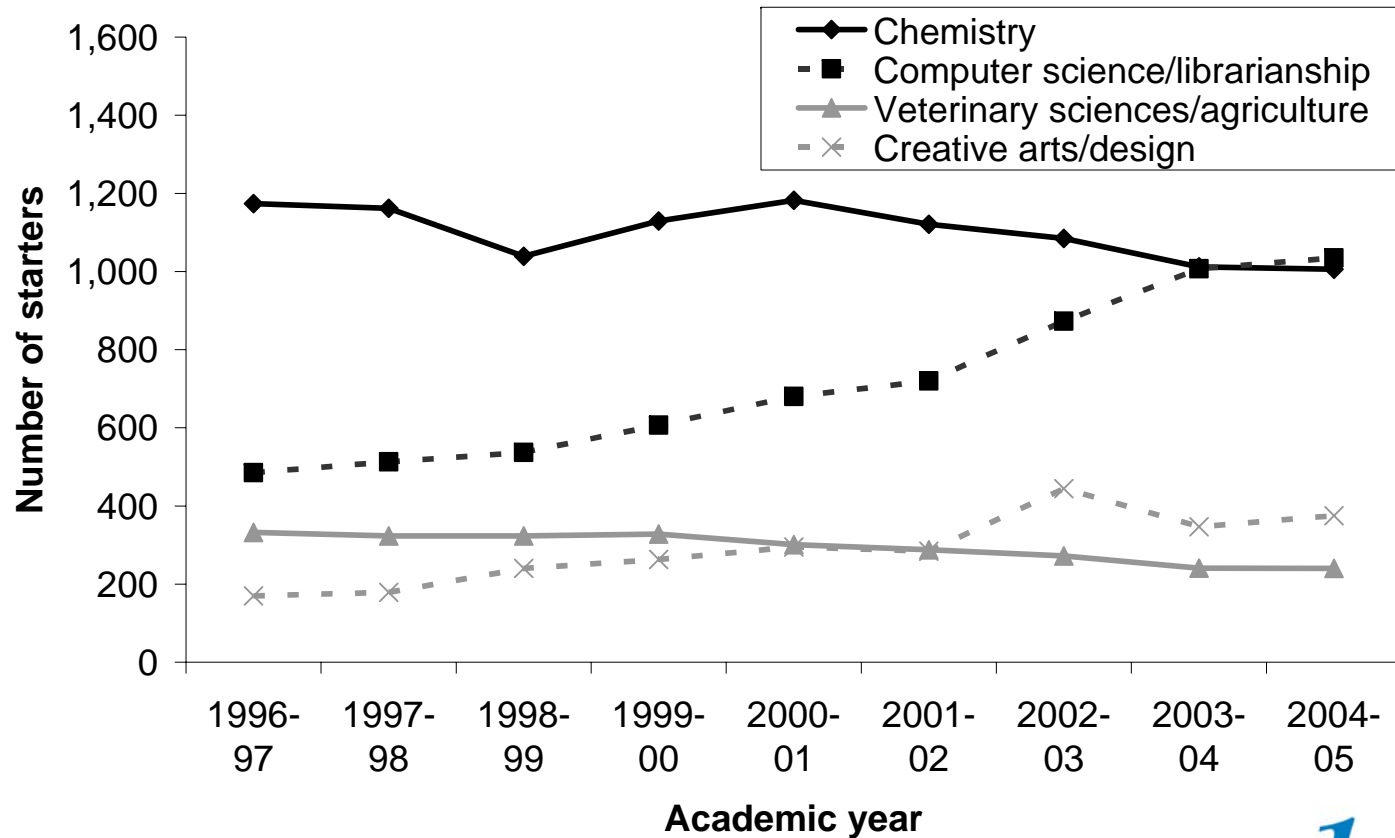
Age group	1996-97	2004-05	% change
21 and under	1,673	924	-45%
22 or 23	3,826	4,878	27%
24 or 25	2,293	3,343	46%
26 or 27	1,512	2,233	48%
28 and over	4,537	5,541	22%
Total	13,841	16,919	22%
Mean age	26.9	27.3	

Mean age also rising for part-time starters:
35.8 (1996-97) to 37.6 (2004-05)

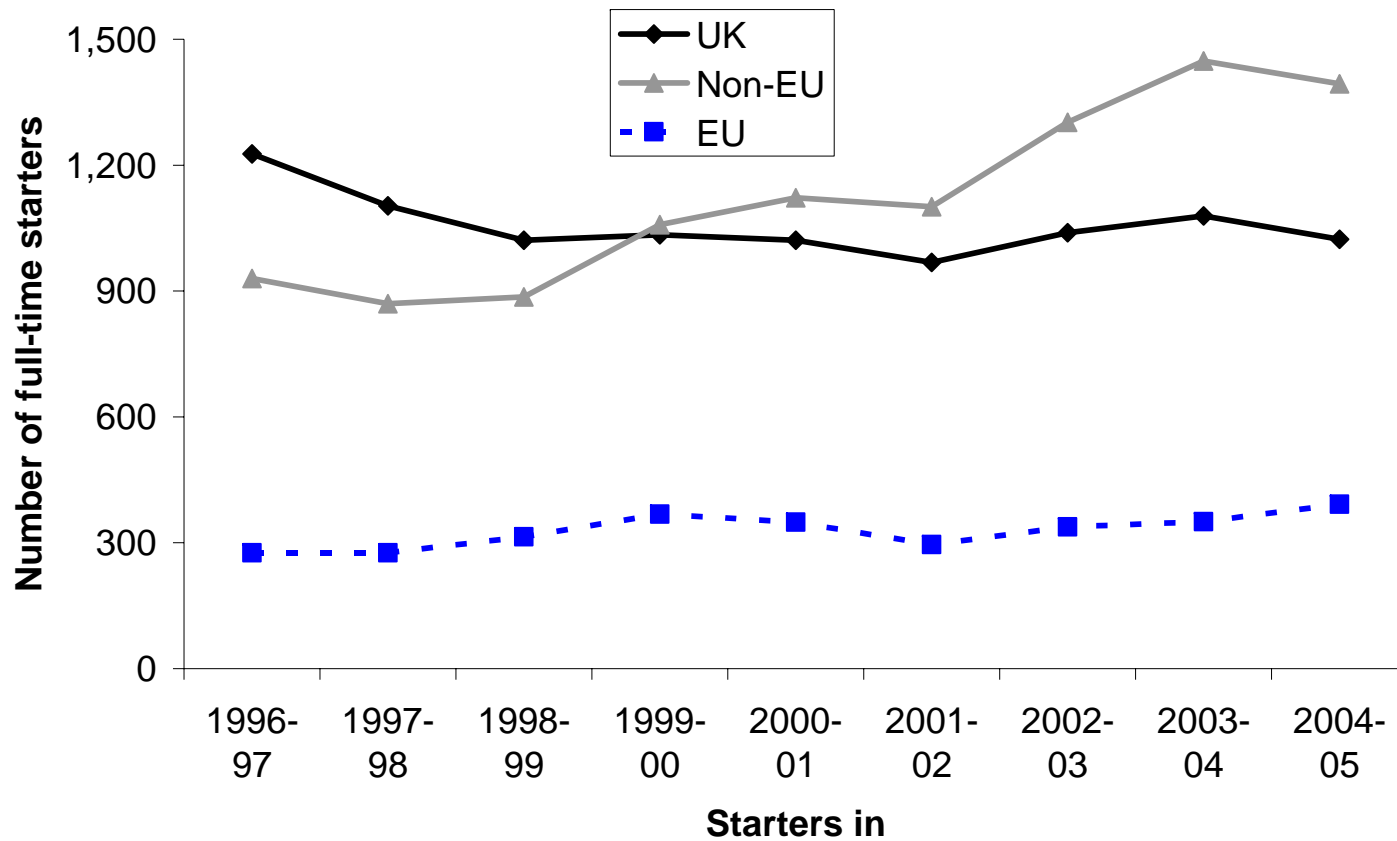
Other student characteristics

- % of UK domiciled starters who are non-white is increasing
 - Full-time: 9% in 1996-97, 12% in 2004-05
 - Part-time: 10% in 1996-97, 14% in 2004-05
- % of starters who are declared disabled is increasing
 - Full time: 2% in 1996-97, 4% in 2004-05
 - Part time: 1% in 1996-97, 4% in 2004-05

Numbers of full-time starters (selected subjects)



Domicile of full-time starters to engineering



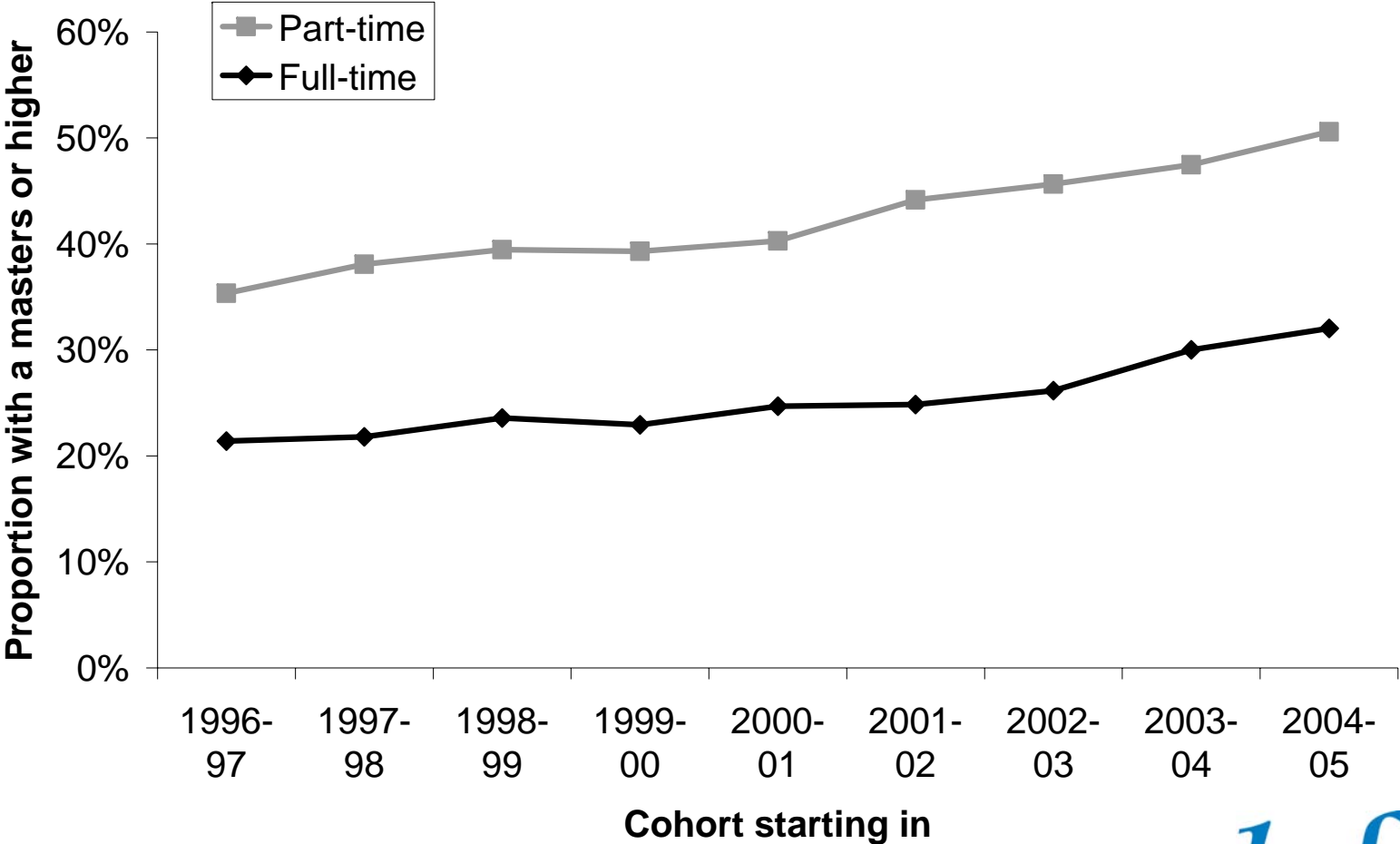
Proportion of females by subject

Subject	1996-97	2004-05
Engineering/building/architecture	19%	22%
Computer science/librarianship	19%	24%
Physics	17%	26%
Veterinary sciences/agriculture	39%	53%
Languages	53%	61%
Subjects allied to medicine	58%	61%
Education	58%	66%
Total	38%	44%

Qualification on entry for full-time starters

Year prior to entry/UK HEI	Qualification	1996-97	2004-05	% change
Qualification in year prior to entry from UK HEI	Masters	480	817	70%
	First degree (1st class)	1,649	1,546	-6%
	First degree (other)	2,072	1,354	-35%
Qualification earlier		4,112	4,784	16%
Total		8,313	8,501	2%

Proportion of starters with a masters degree or higher



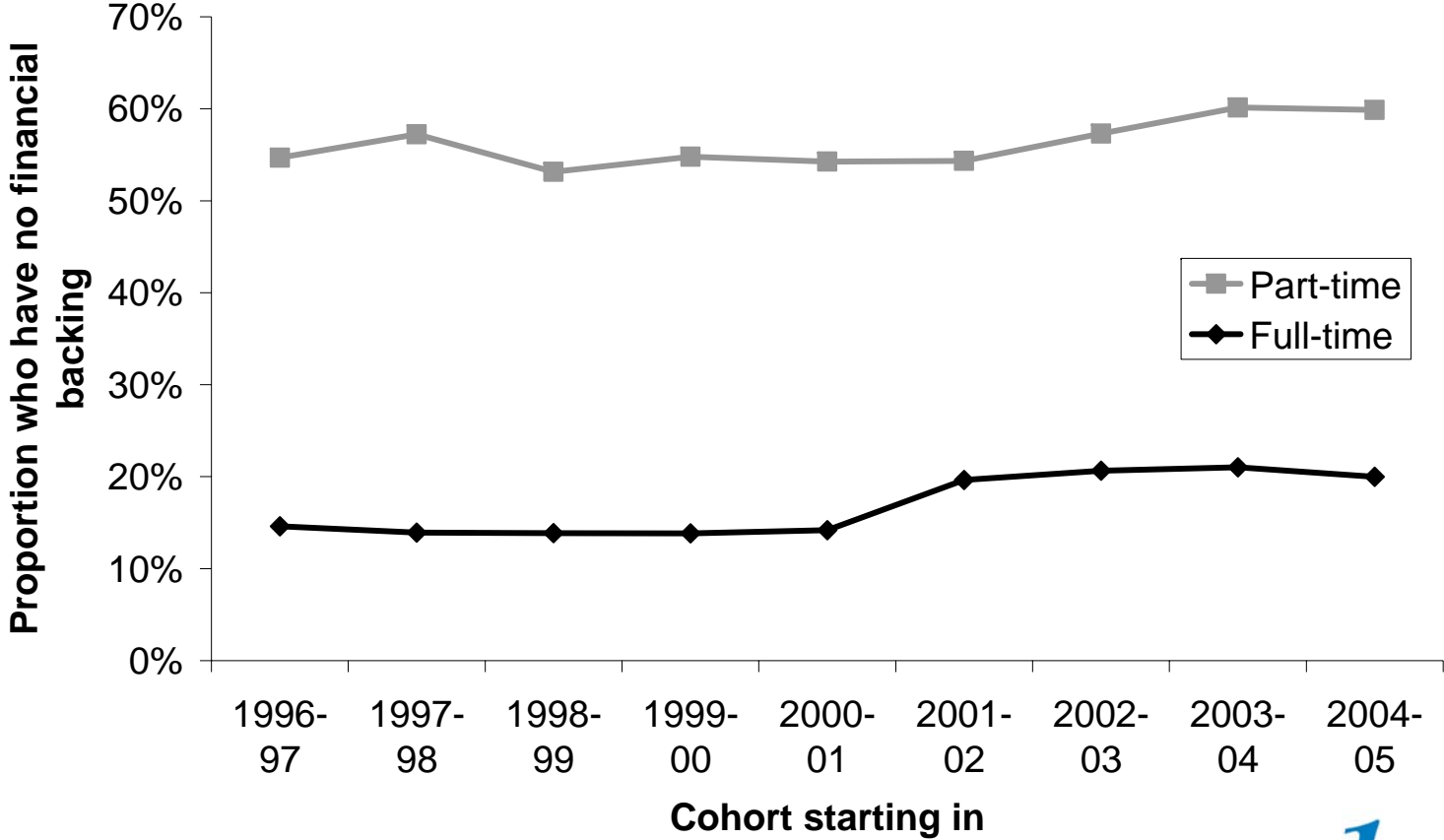
Proportion of full-time starters with a masters degree or higher for selected subjects

Subject	1996-97	2004-05
Chemistry	7%	10%
Physics	17%	12%
Mathematical sciences	15%	24%
Humanities	38%	54%
Creative arts/design	39%	55%
Languages	33%	60%
Total	21%	32%

Source of tuition fees for full-time starters (2004-05)

Major source of tuition fees	UK		EU		Non-EU	
		%		%		%
RC / charity	2,970	35%	374	15%	175	3%
Institution	1,973	23%	725	29%	1,389	23%
Other	1,858	22%	520	21%	2,099	35%
No financial backing	1,700	20%	881	35%	2,255	38%
Total	8,501	100%	2,500	100%	5,918	100%

Proportion of starters with no financial backing for tuition fees



Proportion of full-time starters with no financial backing for selected subjects

Subject	1996-97	2004-05
Chemistry	4%	6%
Physics	3%	6%
Mathematical sciences	8%	11%
Education	31%	41%
Law	29%	43%
Business/administrative studies	27%	43%
Total	15%	20%