



RDF Planner

New features

Jen Reynolds
Vitae Partnerships Manager
5 September 2013

www.vitae.ac.uk

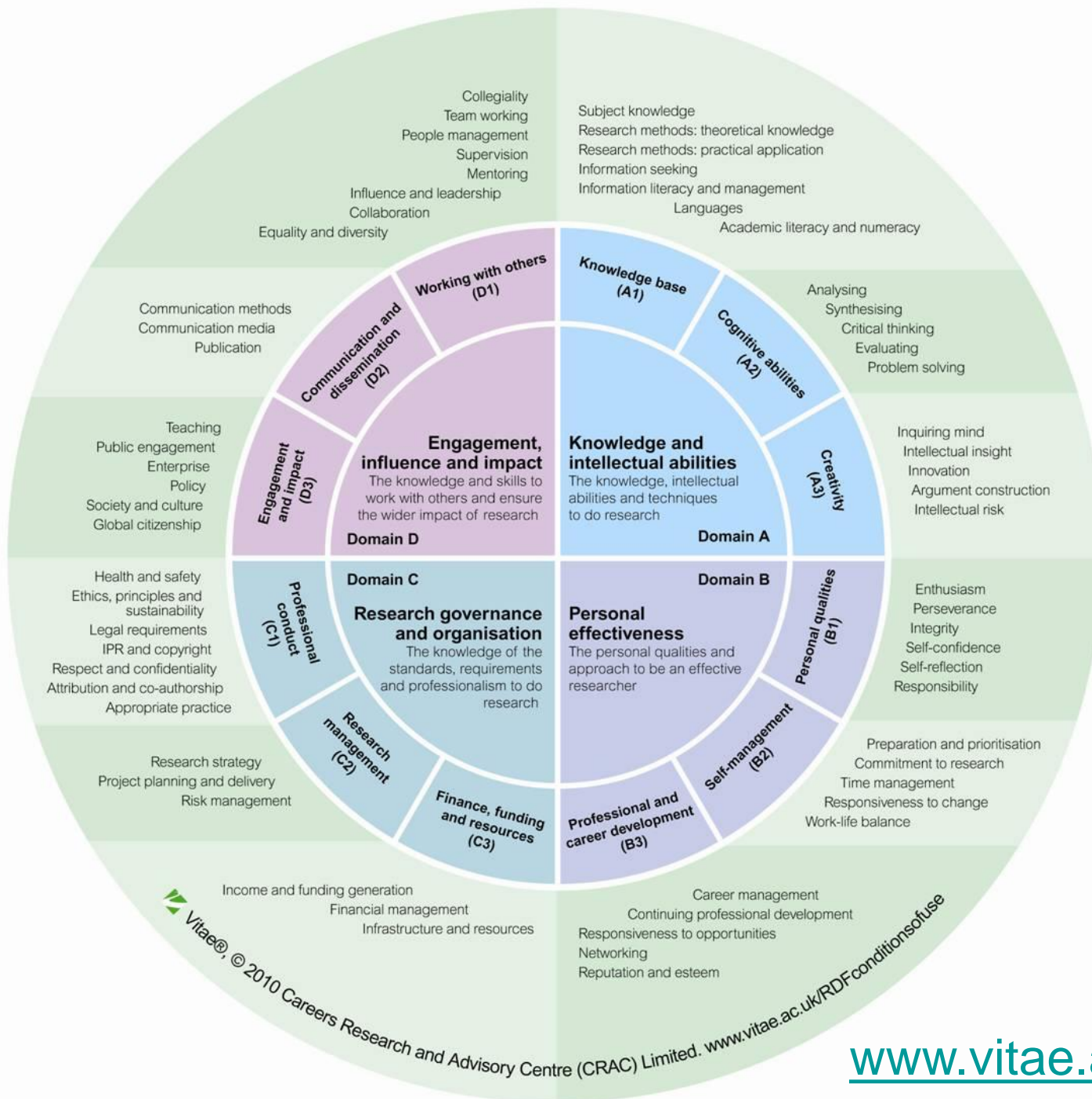
Vitae is supported by Research Councils UK (RCUK),
managed by CRAC: The Career Development Organisation
and delivered in partnership with regional Hub host universities

Aims

- ✔ Demonstrate new features
- ✔ Explore emerging models of use
- ✔ Share practice with subscribers

Researcher Development Framework

- ✔ RDF is a framework for planning, promoting and supporting the personal, professional and career development of researchers
- ✔ How was it created?
 - ✔ Core of the framework consists of data drawn from over 100 interviews
 - ✔ Phenomenographic method – identified over 1,000 characteristics and their variants
 - ✔ Input from experts, specialists and stakeholders
 - ✔ Clustered into the 4 main areas or Domains



Resources

- ✔ Briefings for stakeholders
- ✔ Support to help implement/map the RDF
- ✔ Graphics for use on web and printed material
- ✔ Guidance on how researchers can get the best from the RDF
- ✔ Lenses to demonstrate context

vitae Realising the potential of researchers
Researcher Development Framework

Vitae Researcher Development Framework Briefing for researcher developers

Overview

Researchers make an important contribution to the UK economy both by stretching our research base and as leaders in the workplace. The Vitae Researcher Development Framework (RDF) underpins a single new approach to developing world-class researchers.

The Framework has been developed by and for researchers working in higher education as an aid to planning, providing and enhancing professional and career development. It articulates the knowledge, behaviours and attitudes of successful researchers and encourages all researchers to realise their potential.

The associated Researcher Development Statement, endorsed by the UK Research Funding Bodies, Research Councils UK, Universities UK and other national organisations, provides a policy reference for researcher development strategies. Together with the RfL, operational Framework it supports the implementation of policy related to researchers' professional development in the UK.

This is one of a series of briefings developed by Vitae for a range of stakeholders involved in the professional and career development of researchers.

For further information about the Researcher Development Framework and other briefings in this series visit www.vitae.ac.uk/rdf

It is helpful to have a national framework, agreed in a common and consistent way, to ensure that all researchers, regardless of their institution, are working towards the same goals and standards.

vitae Researcher Development Framework Planner

Domain D: Engagement, influence and impact
Subdomain D2: Communication and dissemination
Descriptors D2.1 Communication methods, D2.2 Communication media

What is it?
Communication is a key skill for researchers and is vital to your success whether you choose an academic or non-academic career path. Being a good communicator is more than just being able to deliver a lecture. It's about conveying complex concepts and information to a wide range of people. To do this effectively, you will need to identify and use relevant tools and techniques to fully engage your audience.

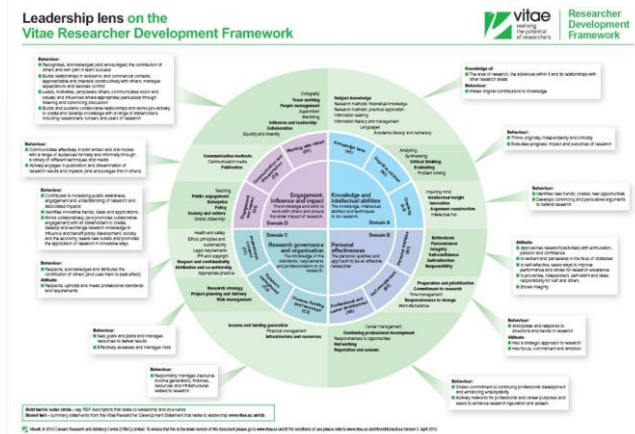
Why is it important?
The art of communication is the language of leadership
James Humes (author and former presidential speechwriter)

Communication is at the very heart of your research practice. You might be undertaking exceptional research but if you are unable to communicate effectively, you will not be recognised for it.

How can you improve?

D2.1 Communication methods

- Volunteer to chair a seminar or conference session. Through this you will develop your ability not only to ask appropriate questions, but also to understand other people's research that may not be in your field. You will enhance your critical thinking under time pressure in this environment.
- Get involved with a public engagement activity. This will help you refine communicating your complex research topic to non-specialist audiences. You may also find that by involving the public in your research, you will receive ideas and perspectives that influence the future direction of your research.
- A good argument will have a clear and logical flow (line of reasoning) with sufficient evidence to back this up. Hone your argument skills through practice with a colleague, partner or friend. Choose a topic you both know a little about and put forward an argument around it. It doesn't have to be about research, it could be something in the news or a hobby. The aim is to reason and communicate your argument clearly. The





Researcher Development Framework Planner



Take control of your professional and career development with the Researcher Development Framework (RDF) Planner

Use the RDF Planner to:

- Assess your capabilities and expertise
- Reflect on your achievements
- Identify areas for development
- Create an action plan
- Access resources and activities

The RDF Planner brings the VitaE Researcher Development Framework (RDF) to your fingertips. The VitaE RDF has been developed empirically through interviews with researchers from a wide range of disciplines and describes the knowledge, behaviour and attributes of excellent researchers at all experience levels.

www.vitae.ac.uk/rdf

myRDF

Sign in using your account on:

Windows Live™ ID ▶

Yahoo! ▶

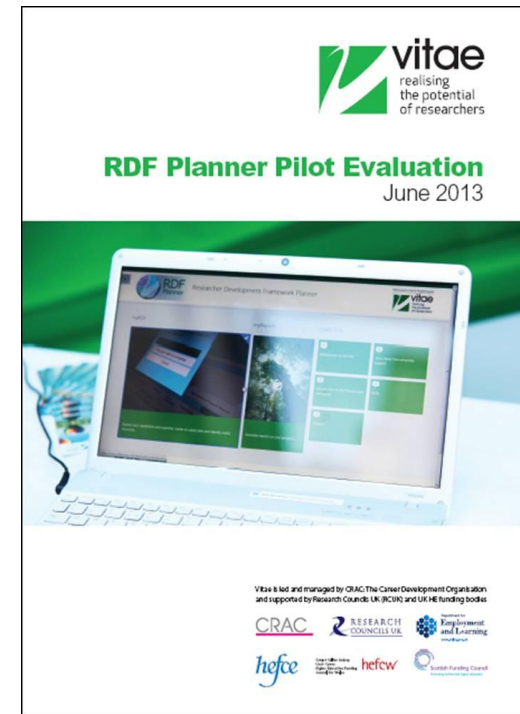
Google ▶

Facebook ▶

[Getting started guide](#)

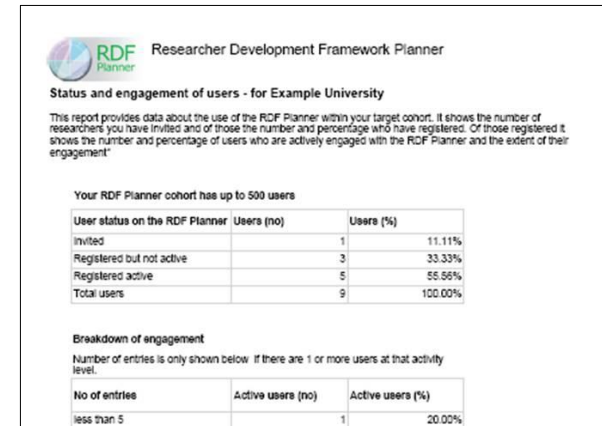
Outcomes from pilot evaluation

- ✔ Supported institutional aims and drivers
- ✔ Institutional models of use
- ✔ Increased RDF awareness and changed perceptions of PDP
- ✔ Encouraged researchers to take responsibility
- ✔ Demonstrated to institutions the value, usefulness, benefits and ease of use
- ✔ Highlighted institutional training provision
- ✔ Provided usage figures and patterns



New features

- Evidence repository
- Lenses
- User report: evidence useful for CV
- Administrator report: user engagement
- Accessibility



RDF Planner Researcher Development Framework Planner

Status and engagement of users - for Example University

This report provides data about the use of the RDF Planner within your target cohort. It shows the number of researchers you have invited and of those the number and percentage who have registered. Of those registered it shows the number and percentage of users who are actively engaged with the RDF Planner and the extent of their engagement*

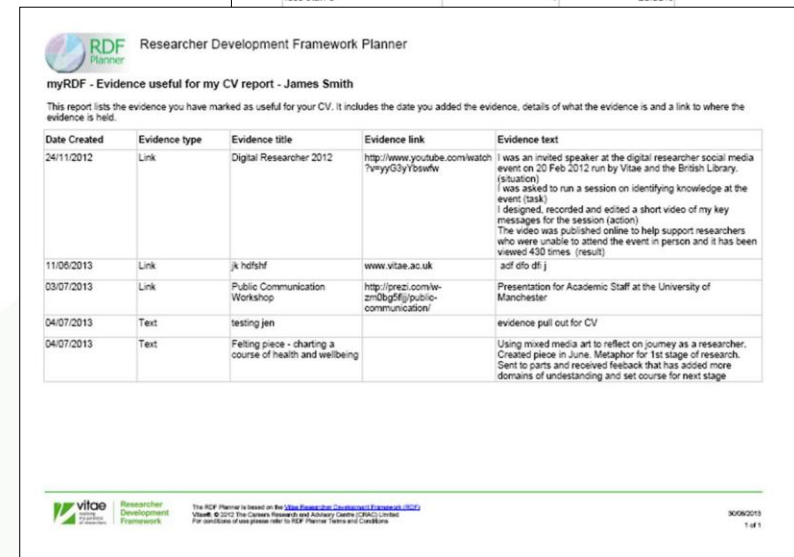
Your RDF Planner cohort has up to 500 users

User status on the RDF Planner	Users (no)	Users (%)
Invited	1	11.11%
Registered but not active	3	33.33%
Registered active	5	55.56%
Total users	9	100.00%

Breakdown of engagement

Number of entries is only shown below if there are 1 or more users at that activity level.

No of entries	Active users (no)	Active users (%)
less than 5	1	20.00%



RDF Planner Researcher Development Framework Planner

myRDF - Evidence useful for my CV report - James Smith

This report lists the evidence you have marked as useful for your CV. It includes the date you added the evidence, details of what the evidence is and a link to where the evidence is held.

Date Created	Evidence type	Evidence title	Evidence link	Evidence text
24/11/2012	Link	Digital Researcher 2012	http://www.youtube.com/watch?v=yv03y1bawfw	I was an invited speaker at the digital researcher social media event on 20 Feb 2012 run by Vitae and the British Library. (situation) I was asked to run a session on identifying knowledge at the event (task) I designed, recorded and edited a short video of my key messages for the session (action) The video was published online to help support researchers who were unable to attend the event in person and it has been viewed 430 times. (result)
11/06/2013	Link	jk hdtshf	www.vitae.ac.uk	adf olo dfl j
03/07/2013	Link	Public Communication Workshop	http://prezi.com/ve-zm18gdf/public-communication/	Presentation for Academic Staff at the University of Manchester
04/07/2013	Text	testing jen		evidence pull out for CV
04/07/2013	Text	Feeling piece - charting a course of health and wellbeing		Using mixed media art to reflect on journey as a researcher. Created piece in June. Metaphor for 1st stage of research. Sent to peers and received feedback that has added more domains of understanding and set course for next stage

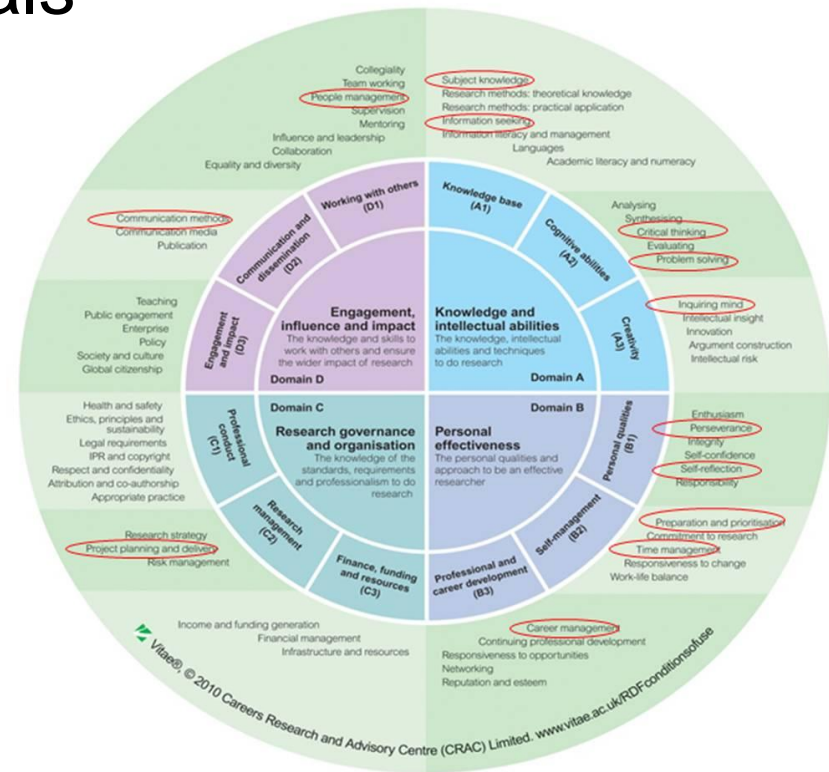
vitae Researcher Development Framework

The RDF Planner is based on the [VitaE Researcher Development Framework \(VDF\)](#)
 Vitae. ©2013 The Careers Research and Advisory Centre (CRAC) Limited
 For conditions of use please refer to RDF Planner Terms and Conditions

30/09/2013 1 of 1

Coming soon

- ✔ Getting Started lens
- ✔ Resource pack of materials
- ✔ Examples of types of evidence
- ✔ Case studies from RDF Planner users



Next year

Materials:

- ✔ targeted at supervisors
- ✔ to assist in highlighting benefits to researchers in sharing reports
- ✔ aimed at senior staff
- ✔ anything else?

Emerging models of use

- ✔ Whole organisation
- ✔ Networks of organisations
- ✔ Building capability over a period of time
- ✔ Specific cohorts
- ✔ International campuses



Jen Reynolds: jen.reynolds@vitae.ac.uk
www.vitae.ac.uk/rdfplanner